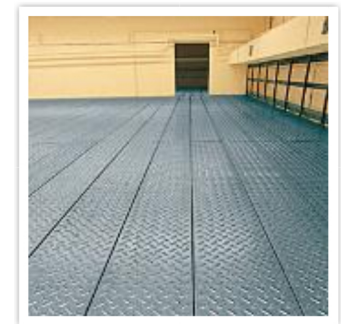


Panel type	STEPLARM® - closed surface with extruded relief, corrugated.							
Upper bump:	8x46 mm/ c-c 58 mm							
Bottom bump:	-							
Properties:	- completely opaque							
	- easy to clean							
Material:	Steel 2-3 mm			- hot dip galvanized				
	Aluminum 3 mm			- anodized				
	Stainless steel 2-2,5 mm			- etched				
Size of panels:	Height mm	Width mm						
	50	182	240	298	-	356	414	475
	75	182	240	298	-	356	-	-
	100	182	240	298	-	-	-	-
	Length of panels:	Standard size L=4020 mm or custom size. Max. length L=6000 mm						



NB! The data provided is informative. Specify the exact specification with the supplier.

METAL DISAIN