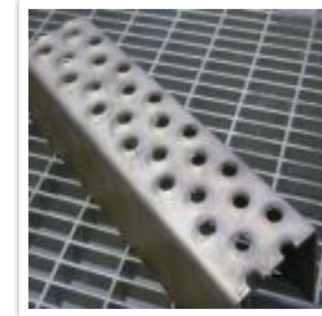


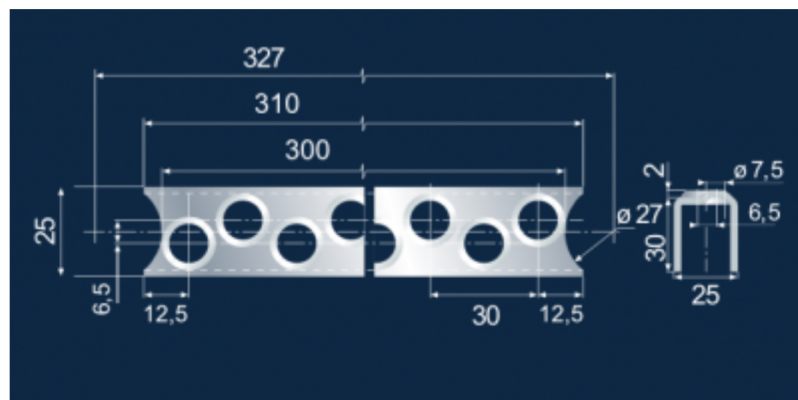
**Type:** Ladder rungs

**Material:** Steel, stainless steel, aluminum

Format:	Width x Height x Thickness mm	Length of profile mm	Length of strip mm	Side cutout d mm
	25x30x2	327	L=2000	27
	35x30x2	334	L=2000	34
	50x40x2	501	L=2000	49



Profiles with a perforated top surface designed for easy manufacture rungs. Profiles are available in the form of strips or pieces of finished size with milled ends.



**METAL DISAIN**